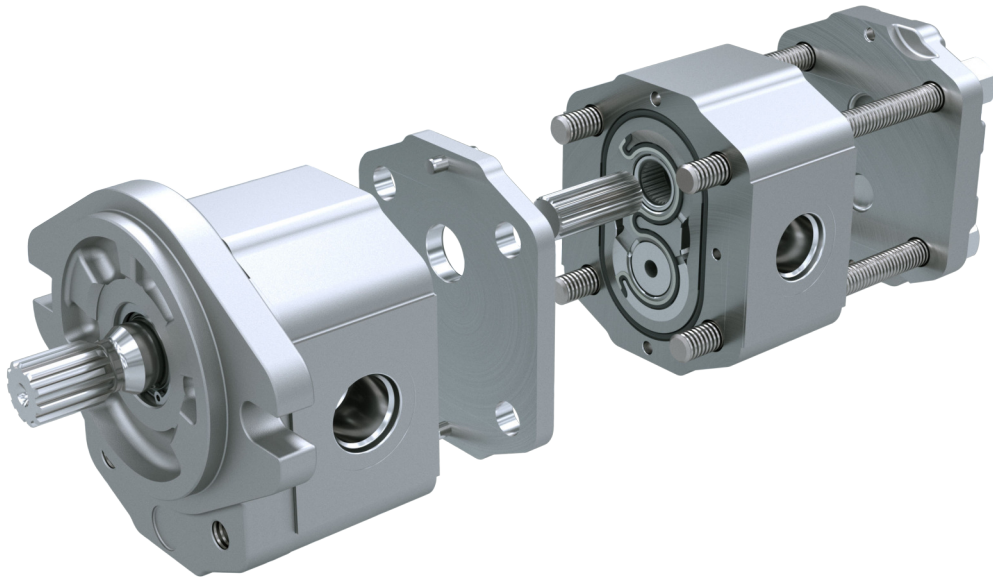


Technical Information

GearMe

Aluminum Group 2 Flex Pump



Revision history*Table of revisions*

Date	Changed	Rev
June 2023	Added marking position model code option	0207
February 2023	Fixed typo	0206
January 2023	Renamed product	0205
July 2022	QR code on page 5 corrected	0204
June 2022	Updated pump model code information (special features)	0203
March 2022	Small updates	0202
January 2022	Changed cover image, Edited flanges specs and product code information	0201
April 2021	Corrected PS1 Schematic	0102
March 2021	First edition	0101

Contents

General Information

Overview.....	4
Pump displacements.....	4
Training videos.....	5

Technical Information

Technical data.....	6
---------------------	---

Product Code

Pump model code - Modules.....	7
A Family.....	7
B Displacement.....	7
C Rotation.....	7
D Mounting flange.....	7
E Drive Shaft.....	8
F Inlet size; G Outlet size.....	8
I Rear cover.....	8
L Shaft seal.....	9
M Sealing.....	9
N Screws.....	9
O Valve settings.....	9
P Marking type.....	9
Q marking position.....	9
R Special features.....	9

Mounting flange options

Flanges.....	10
E10.....	10
B10.....	11
B20.....	11
B22.....	12
SA1.....	12
SA2.....	13
SB1.....	13

Shaft options

Shafts.....	14
-------------	----

Adapter kit

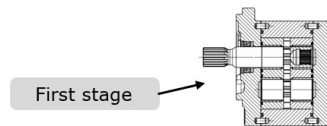
Dimensions

General Information

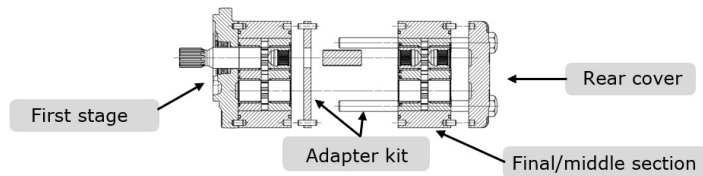
Overview

The Flex Program is a flexible solution which gives distributors the possibility to assemble different modules and components according to end-customer specific requirements.

Single pump



Multiple pump

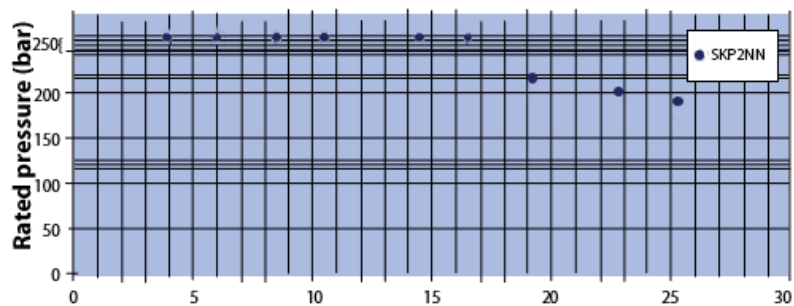


The basic layout is designed to have:

- Pre-assembled first sections from factory (submitted to cut-in and tested) then equipped with special shaft with rear spline.
- Mid “sections” provided without flange and cover (submitted to cut-in and tested)
- Components (intermediate flanges with coupling, rear covers, assembly screws) supplied individually

Pump displacements

Quick reference chart for pump displacements vs rated pressure



General Information

Training videos

Training videos are accessible at this link: [Gear Pumps and Motors - YouTube](#)



Technical Information

Technical data

Frame size		4.0	6.0	8.0	011	014	017	019	022	025
Displacement	cm ³ /rev [in ³ / rev]	3.9 [0.24]	6.0 [0.37]	8.4 [0.51]	10.8 [0.66]	14.4 [0.88]	16.8 [1.02]	19.2 [1.17]	22.8 [1.39]	25.2 [1.54]
SKP2										
Peak pressure	bar [psi]	280 [4060]	280 [4060]	280 [4060]	280 [4060]	280 [4060]	280 [4060]	260 [3770]	230 [3335]	200 [2900]
Rated pressure		250 [3625]	250 [3625]	250 [3625]	250 [3625]	250 [3625]	250 [3625]	240 [3480]	210 [3045]	190 [2755]
Minimum speed at 0-100 bar	min ⁻¹ (rpm)	600	600	600	500	500	500	500	500	500
Minimum speed at 100-180 bar		1200	1200	1000	800	750	750	700	700	700
Min. speed at 180 bar to rated pressure		1400	1400	1400	1200	1000	1000	1000	800	800
Maximum speed		4000	4000	4000	4000	3500	3000	3000	3000	3000
Both										
Weight	kg [lb]	2.3 [5.1]	2.4 [5.3]	2.5 [5.5]	2.7 [5.8]	2.9 [6.3]	3.0 [6.5]	3.1 [6.7]	3.2 [7.0]	3.3 [7.3]
Moment of inertia of rotating components	x 10 ⁻⁶ kg·m ² [x 10 ⁻⁶ lb·ft ²]	21.3 [505]	26.5 [629]	32.4 [769]	38.4 [911]	47.3 [1122]	53.3 [1265]	59.2 [1405]	68.1 [1616]	74.1 [1758]
Theoretical flow at maximum speed	l/min [US gal/ min]	15.6 [4.1]	24.0 [6.3]	33.6 [8.9]	43.2 [11.4]	50.4 [13.3]	50.4 [13.3]	57.6 [15.2]	68.4 [18.0]	75.6 [20.0]

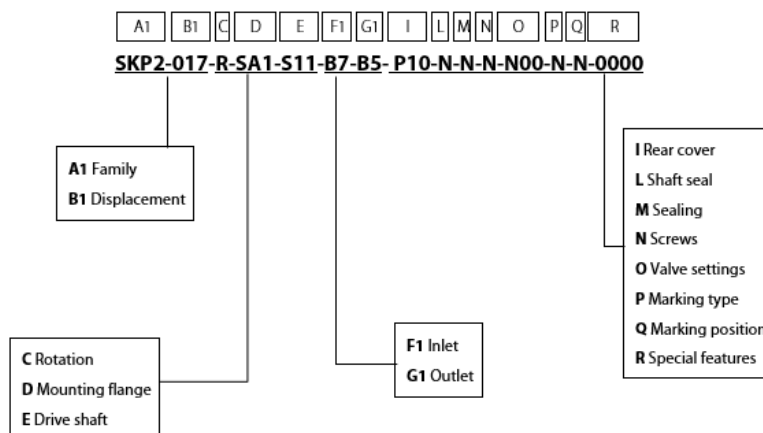
1 kg·m² = 23.68 lb·ft²

! Caution

The rated and peak pressure mentioned are for pumps with flanged ports only. When threaded ports are required a de-rated performance has to be considered. To verify the compliance of a high pressure application with a threaded ports pump apply to a Danfoss representative.

Product Code

Pump model code - Modules



A Family

SKP2	High Torque Group 2 Pump
-------------	--------------------------

B Displacement

4.0	3.9 cm ³ /rev [0.240 in ³ /rev]
6.0	6.0 cm ³ /rev [0.360 in ³ /rev]
8.0	8.4 cm ³ /rev [0.513 in ³ /rev]
011	10.8 cm ³ /rev [0.659 in ³ /rev]
014	14.4 cm ³ /rev [0.879 in ³ /rev]
017	16.8 cm ³ /rev [1.025 in ³ /rev]
019	19.2 cm ³ /rev [1.171 in ³ /rev]
022	22.8 cm ³ /rev [1.391 in ³ /rev]
025	25.2 cm ³ /rev [1.538 in ³ /rev]

[Other frame sizes and displacements are available upon request.](#)

C Rotation

R	Right (Clockwise)
L	Left (Counterclockwise)

D Mounting flange

NNN	Without flange
E10	European flange pilot Ø36,5+4 holes
B10	German 4 bolts pilot Ø80
B20	German 2-bolt (\ pattern through body) pilot Ø50

Product Code

B22	German 2-bolt (/ pattern through body) pilot Ø50
SA1	SAE A pilot Ø82,55+2 holes
SA2	SAE A pilot Ø82,55+2 holes+seal on pilot
SB1	SAE B-pilot Ø101,6+2 holes (available only with drive shaft S13)

E Drive Shaft

T50	Taper 1:5-M12x1,25-Key 3
T80	Taper 1:8-M12x1,25-Key 4
PS1	Parallel SAE Ø15,875 (Ø5/8") - L23,8 - Key 4x18
PS3	Parallel SAE Ø19,05 (Ø3/4") - L23,8 - Key 4,775x20
S09	Spline SAE J498-9T-16/32
S11	Spline SAE J498-11T-16/32
S13	Splined SAE J498-13T-16/32 (available only with mounting flange SB1)
SD1	Spline DIN 5482 B17x14 - L10
SD2	Spline DIN 5482 B17x14 - L14
N11	No shaft end - internal spline two sides

F Inlet size; G Outlet size

B5	15x35xM6	
B6	15x40xM6	
B7	20x40xM6	
C3	13,5x30xM6	
C5	13,5x40xM8	
C7	20x40xM8	
D5	M18x1,5	
D7	M22x1,5	
E4	3/4-16UNF	
E5	7/8-14UNF	
E6	1-1/16-12UN	
F3	3/8 GAS	
F4	1/2 GAS	
F5	3/4 GAS	
NN	Without port on body	

[For ports combination refer to aluminum gear pumps group 2 catalog, document #BC315962412551](#)

I Rear cover

NNN	Without cover
P10	Standard pump cover
I10	Cover with relief valve

Product Code

L Shaft seal

V	VITON
----------	-------

M Sealing

N	NBR
----------	-----

N Screws

B	Anti-corrosion screws
N	Burnished screws
0	Without screws

O Valve settings

N00	No valve
V**	Integral relief valve

[For valve settings refer to aluminum gear pumps group 2 catalog.](#)

P Marking type

N	Standard Danfoss Marking
A	Standard Danfoss Marking+Customer Code
Z	Without Marking

Q marking position

S	Sticker on the body
----------	---------------------

R Special features

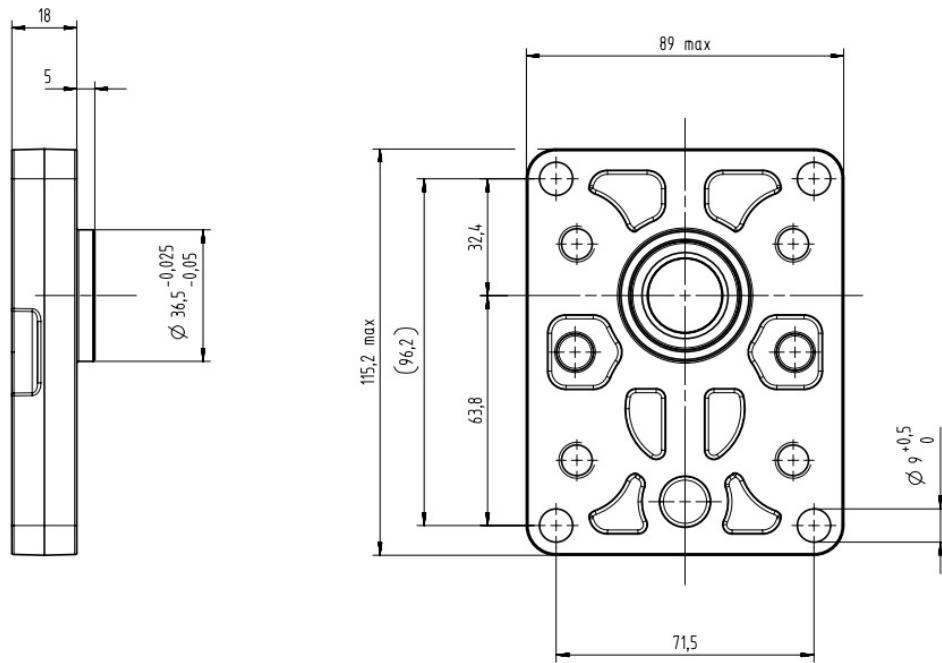
0000	No special features
IS00	Drive shaft with internal spline at the end, which can also be used as a first stage of a multiple pump
BPC0	Body for ports on cover
BSI0	Body for single inlet
B017	Short bearings
X001	IS00+BSI0
X002	IS00+B017
X003	X001+B017

[Special features are available upon request. Refer to "Training videos" chapter for more information about special features.](#)

Mounting flange options

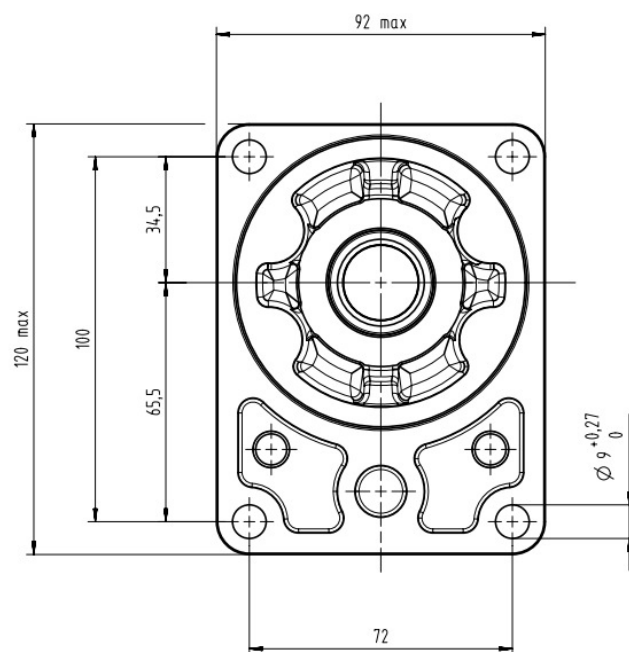
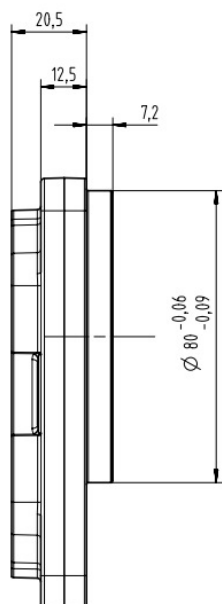
Flanges

E10

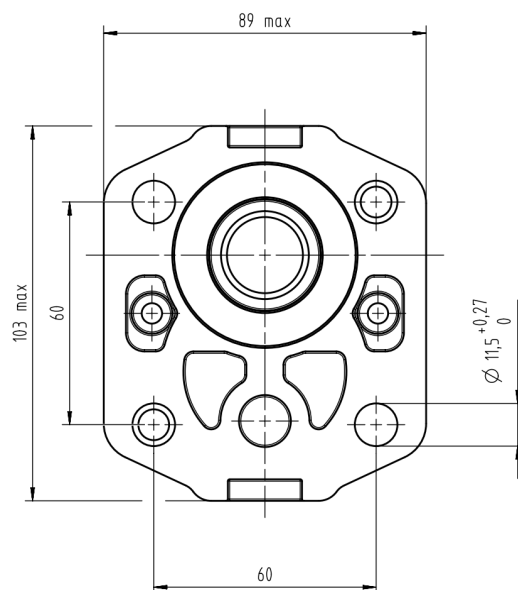
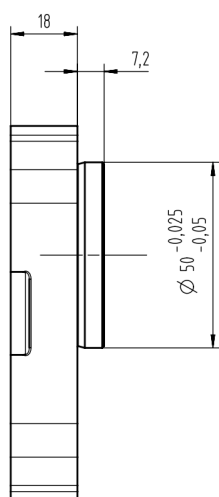


Mounting flange options

B10

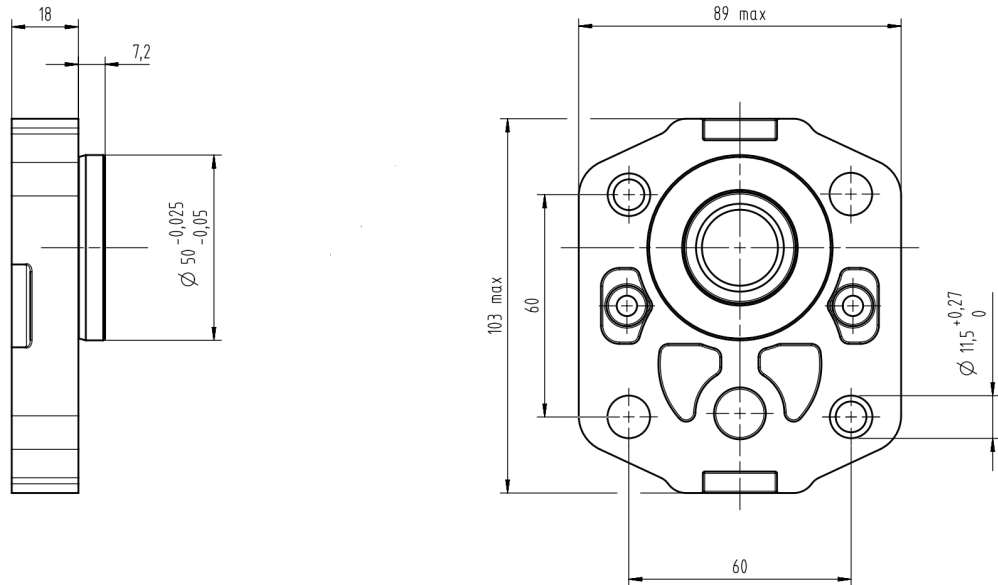


B20

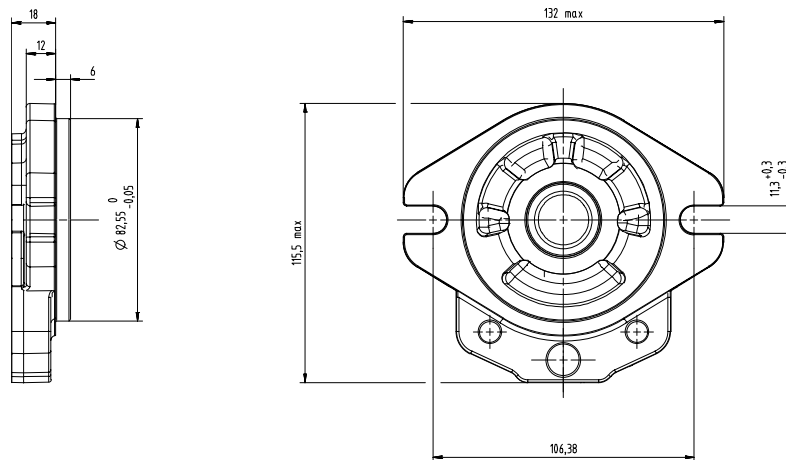


Mounting flange options

B22

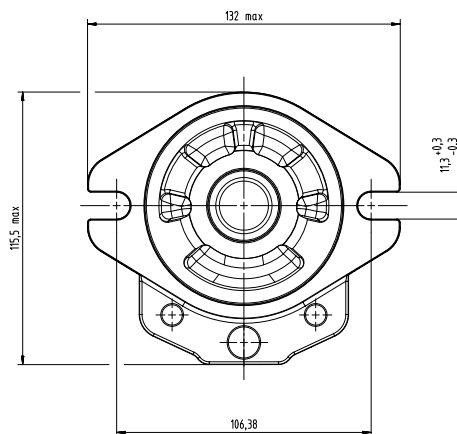
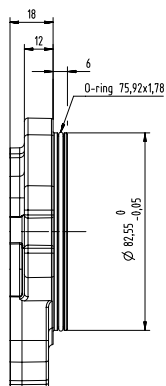


SA1

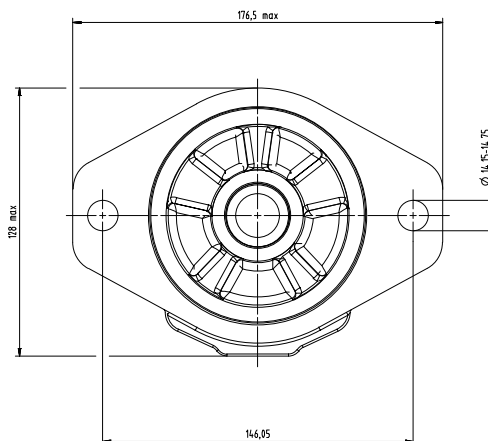
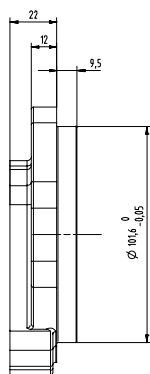


Mounting flange options

SA2



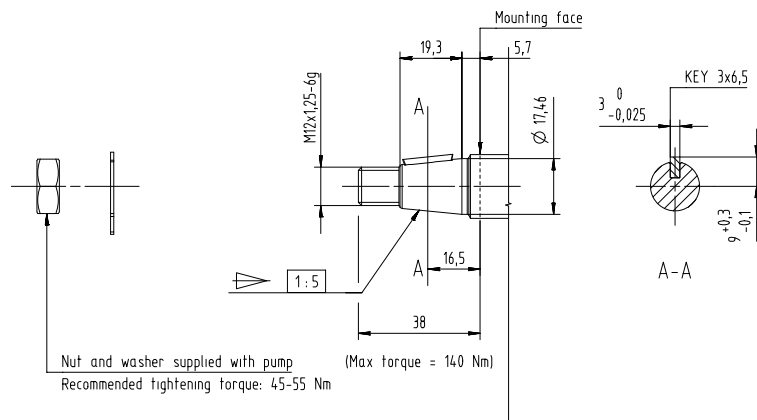
SB1



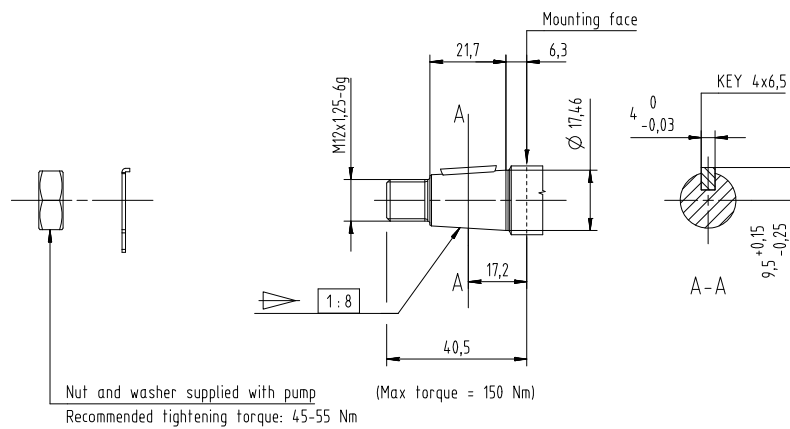
Shaft options

Shafts

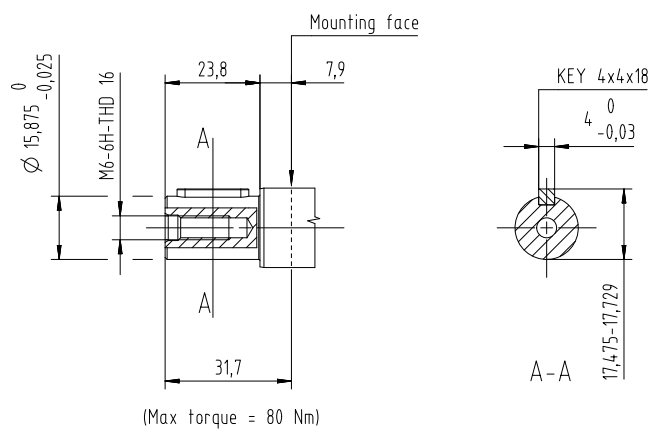
T50



T80

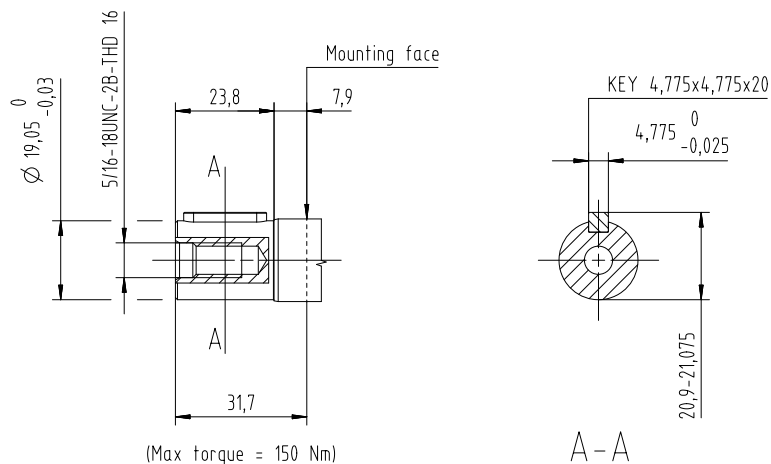


PS1

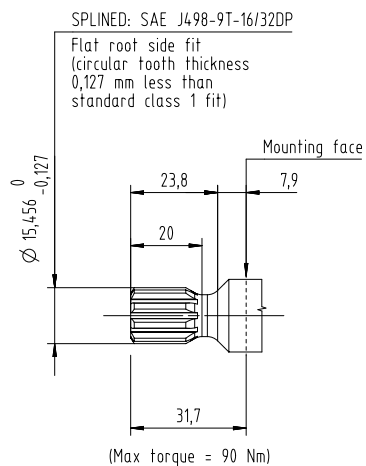


Shaft options

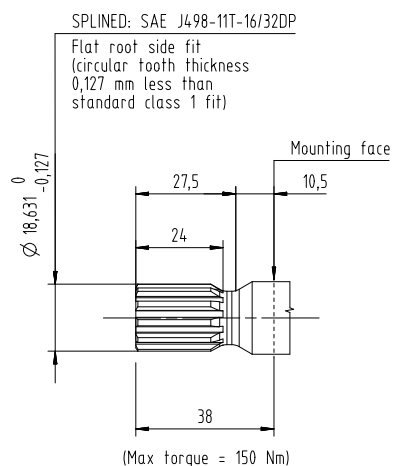
PS3



S09

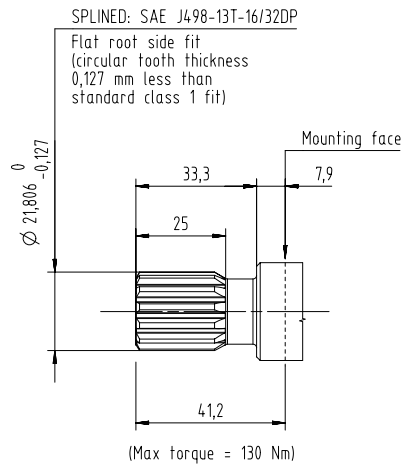


S11

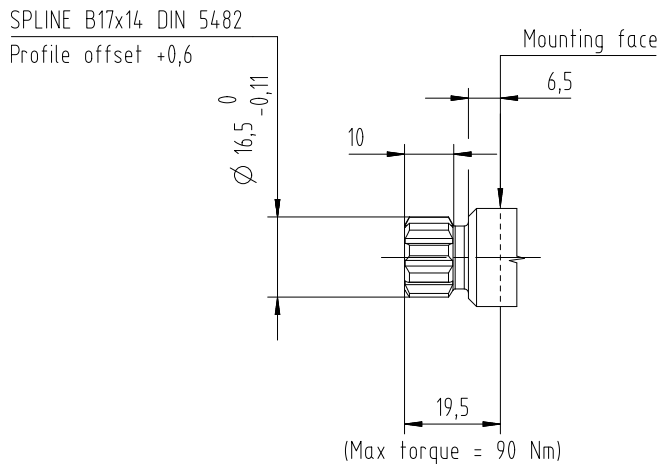


Shaft options

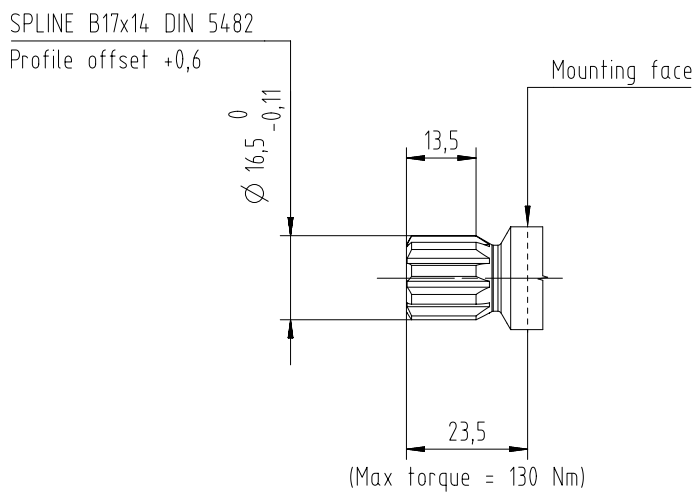
S13



SD1



SD2



Adapter kit

The adapter kit is required to combine two single pumps in one multiple pump. With the special coupling it is possible to sustain up to 120 Nm torque transmission, with the following advantages:

- High simultaneous working pressure by stages available
- High displacements by stages

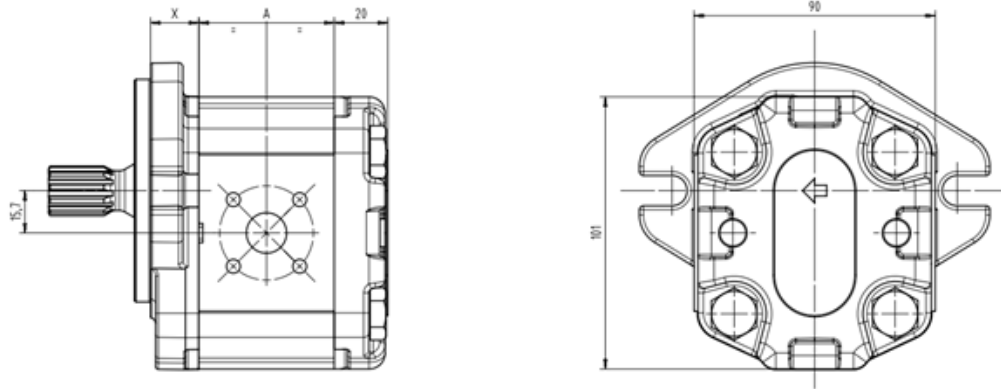
The intermediate plate has also passed 200 hours salt spray test.

The adapter kit, code 11268956, is composed by:

- Intermediate plate
- Dowel
- Coupling



Dimensions



Frame size	4.0	6.0	8.0	011	014	017	019	022	025
Dimension A	50.5	54	58	62	68	72	76	82	86

Mounting flange	E10	B10	B20 (B22)	SA1 (SA2)	SB1
Dimension X	18	20.5	18	18	22

Products we offer:

- Cartridge valves
- DCV directional control valves
- Electric converters
- Electric machines
- Electric motors
- Gear motors
- Gear pumps
- Hydraulic integrated circuits (HICs)
- Hydrostatic motors
- Hydrostatic pumps
- Orbital motors
- PLUS+1® controllers
- PLUS+1® displays
- PLUS+1® joysticks and pedals
- PLUS+1® operator interfaces
- PLUS+1® sensors
- PLUS+1® software
- PLUS+1® software services, support and training
- Position controls and sensors
- PVG proportional valves
- Steering components and systems
- Telematics

Danfoss Power Solutions is a global manufacturer and supplier of high-quality hydraulic and electric components. We specialize in providing state-of-the-art technology and solutions that excel in the harsh operating conditions of the mobile off-highway market as well as the marine sector. Building on our extensive applications expertise, we work closely with you to ensure exceptional performance for a broad range of applications. We help you and other customers around the world speed up system development, reduce costs and bring vehicles and vessels to market faster.

Danfoss Power Solutions – your strongest partner in mobile hydraulics and mobile electrification.

Go to www.danfoss.com for further product information.

We offer you expert worldwide support for ensuring the best possible solutions for outstanding performance. And with an extensive network of Global Service Partners, we also provide you with comprehensive global service for all of our components.

Local address:

Hydro-Gear

www.hydro-gear.com

Daikin-Sauer-Danfoss

www.daikin-sauer-danfoss.com

**Danfoss
Power Solutions (US) Company**
2800 East 13th Street
Ames, IA 50010, USA
Phone: +1 515 239 6000

**Danfoss
Power Solutions GmbH & Co. OHG**
Krokamp 35
D-24539 Neumünster, Germany
Phone: +49 4321 871 0

**Danfoss
Power Solutions ApS**
Nordborgvej 81
DK-6430 Nordborg, Denmark
Phone: +45 7488 2222

**Danfoss
Power Solutions Trading
(Shanghai) Co., Ltd.**
Building #22, No. 1000 Jin Hai Rd
Jin Qiao, Pudong New District
Shanghai, China 201206
Phone: +86 21 2080 6201

Danfoss can accept no responsibility for possible errors in catalogues, brochures and other printed material. Danfoss reserves the right to alter its products without notice. This also applies to products already on order provided that such alterations can be made without subsequent changes being necessary in specifications already agreed. All trademarks in this material are property of the respective companies. Danfoss and the Danfoss logotype are trademarks of Danfoss A/S. All rights reserved.