



# IMM

Miniature sensors for industrial applications

**SICK**  
Sensor Intelligence.

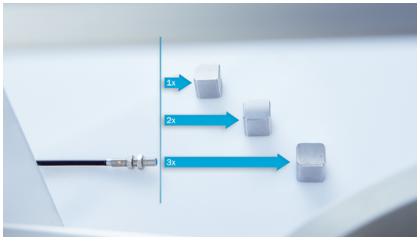
Advantages



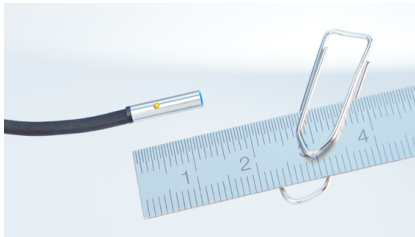
**Maximum sensing ranges for great freedom in machine design**

Minimal space requirements thanks to the tiny dimensions are what characterize the IMM miniature sensors from SICK. And they make no compromises when it comes to performance. With their large sensing ranges of up to 6 mm, they IMM ensure stable processes and detect objects from a safe distance. The combination of a large sensing range and minimal space requirements increases freedom for machine design as well as the field of application of the sensors. This means not only can non-ferrous metals be detected at long distances, but the sensors can also be used where currently only larger sensors are deployed due to the required sensing ranges.

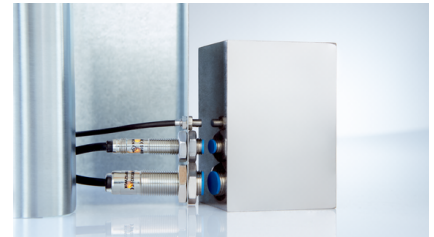
**Perfectly suited for applications with tight installation space but high standards on the sensing range.**



Thanks to the threefold sensing ranges of up to 6 mm, the IMM sensors detect every object from a safe distance.



The smallest IMM sensors are only 12 mm long and have a diameter of just 3 mm: This is how IMM sensors can fit in such small installation spaces.



Minimum space requirements of the sensors in the M8 and M12 sizes without compromises in the sensing range.



**Stable processes and high flexibility in machine design thanks to large sensing ranges and compact miniature design**



## Fast, easy and safe installation

With IMM sensors, you save valuable time when installing the sensors, thereby increasing your productivity. Thanks to the visual adjustment indicator, you have a simple way to ensure reliable sensor function during operation. The high tightening torques and the specially-designed mounting accessories facilitate sensor mounting and ensure permanent and secure assembly. In addition, the IMM are equipped with IO-Link version 1.1. In addition to simple sensor diagnostics and easy access to data, this also supports the assembly process. Device exchange and identification therefore only takes a few seconds, and considerably less wiring work is required thanks to integration into the PLC system via remote IO-Link master modules.

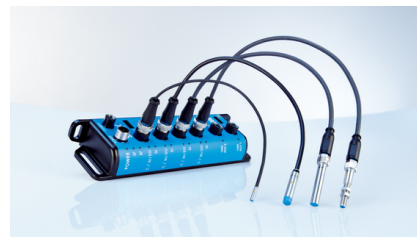
## Huge time savings during installation thanks to additional functions and accessories



Visual adjustment indicator: the LED signalizes when the secured sensing range has been reached.



Reinforced V2A housing for high tightening torques as well as associated mounting accessories make mounting even easier and more secure.



IO-Link: simple device exchange and quick device identification, minimal wiring effort and easy sensor diagnostics as well as easy access to data.



**Thanks to the visual adjustment indicator, IO-Link as well as the associated accessories, installation of IMM sensors is quick and easy.**



## The best choice for highly dynamic handling and assembly processes

In addition to the compact size, the high positioning accuracy and precise switching behavior are the most significant requirements in handling and assembly processes. The IMM sensors with high switching frequency, high repeatability and stable switching signals fulfill these requirements unconditionally. While large sensors often reach their limits with very small objects, IMM devices reliably detect even small objects and are therefore optimally suited for the detection of the tiniest components in supply processes. The low weight of the sensors enables fast acceleration of moving components. A flexible cable is also available on request, which means that highly dynamic processes with several movement cycles per day are no longer a challenge.



High positioning accuracy and precise switching behavior for reliable detection of fast processes.



High detection sensitivity makes possible the detection of small objects such as wires, nuts and screws.



The low weight and flexible cables enable fast acceleration and high bending stresses in dynamic handling processes (flexible cable available on request).



**IMM sensors are perfectly designed for handling and assembly applications**



## Technical data overview

<b>Housing</b>	Cylindrical smooth housing / Cylindrical thread design (depending on type)
<b>Thread size</b>	M4 x 0.5 M5 x 0.5
<b>Housing diameter</b>	Ø 3 mm ... Ø 6.5 mm (depending on type)
<b>Sensing range <math>S_n</math></b>	0.6 mm ... 6 mm (depending on type)
<b>Electrical wiring</b>	DC 3-wire
<b>Housing material</b>	Stainless steel V2A
<b>Enclosure rating</b>	IP68 / IP69K / IP67 (depending on type)
<b>Housing</b>	Cylindrical smooth housing / Cylindrical thread design (depending on type)
<b>Thread size</b>	M4 x 0.5 M5 x 0.5
<b>Housing diameter</b>	Ø 3 mm ... Ø 6.5 mm (depending on type)
<b>Sensing range <math>S_n</math></b>	0.6 mm ... 6 mm (depending on type)
<b>Electrical wiring</b>	DC 3-wire
<b>Housing material</b>	Stainless steel V2A
<b>Enclosure rating</b>	IP68 / IP69K / IP67 (depending on type)

## Product description

Minimal space requirements paired with maximum performance characterize the IMM inductive proximity sensors. They allow the highest level of miniaturization without compromise. Thanks to the 3-fold sensing range up to 6 mm, IMM devices detect objects from a greater distance than before. Due to their small size, low weight and quick and precise switching behavior, the IMM sensors are ideal for highly dynamic handling and assembly processes. State-of-the-art ASIC technology enables the integration of a visual adjustment indicator as well as communication via IO-Link, version 1.1. This saves time for commissioning, reduces installation errors and turns the sensors into suppliers of data for future automation applications at the same time.

## At a glance

- Design: M4 to M5, diameter: 3 mm to 6.5 mm
- Extended sensing ranges: 0.6 mm to 6 mm
- Electrical configuration: DC, 3-wire
- Enclosure rating: IP67
- Temperature range: -25 °C to +70 °C
- Rugged stainless-steel housing, plastic sensing face
- 3-fold sensing ranges, visual adjustment indicator, IO-Link communication

## Your benefits

- Space-saving installation and significant flexibility in machine design thanks to the compact size
- High positioning accuracy and precise switching behavior for reliable detection of fast handling and assembly processes
- Stable processes and high plant availability thanks to 3-fold sensing range
- High detection sensitivity makes possible reliable detection of small objects
- High degree of flexibility and communication options thanks to IO-Link
- Simple mounting thanks to visual adjustment indicator
- The low weight of the sensor enables fast acceleration in dynamic handling processes

## Fields of application

- Handling, assembly processes: positioning
- Supply processes: detecting tiny components, counting
- Small waves: speed monitoring, direction of movement detection
- Gripper: position detection (grripper open or closed)
- Linear or rotating gripper: positioning
- CNC workpiece changer and spindles: position detection

## Ordering information

Other models and accessories → [www.sick.com/IMM](http://www.sick.com/IMM)

- **Sub product family:** IH03
- **Installation type:** flush
- **Electrical wiring:** DC 3-wire

Sensing range $S_n$	Housing	Switching output	Output function	Connection type	Type	Part no.
0.6 mm	Standard design	NPN	NO	Cable, 3-wire, 2 m	IH03-0B6NS-VU1	6020142
		PNP	NC	Cable, 3-wire, 2 m	IH03-0B6PO-VU1	6020143
			NO	Cable with connector M8, 3-pin, with knurled nuts, 0.2 m	IH03-0B6PS-VR1	6038602
		Cable, 3-wire, 2 m		IH03-0B6PS-VU1	6020141	
		Cable, 3-wire, 5 m		IH03-0B6PS-VUB	6020630	
0.8 mm	Short-body	NPN	NO	Cable, 3-wire, 2 m <sup>1)</sup>	IHP03-0B8NSVU2K	6058032
		PNP	NO	Cable, 3-wire, 2 m <sup>1)</sup>	IHP03-0B8PSVU2K	6058033
1 mm	Short-body	NPN	NO	Cable with connector M8, 3-pin, 0.2 m <sup>1)</sup>	IH03-01BNSVR8K	6058026
				Cable, 3-wire, 2 m <sup>1)</sup>	IH03-01BNSVU2K	6058024
		PNP	NO	Cable with connector M8, 3-pin, 0.2 m <sup>1)</sup>	IH03-01BPSVR8K	6058027
				Cable, 3-wire, 2 m <sup>1)</sup>	IH03-01BPSVU2K	6058025

<sup>1)</sup> Do not bend below 0 °C.

- **Sub product family:** IM04
- **Cylindrical thread design:** M4
- **Installation type:** flush
- **Electrical wiring:** DC 3-wire

Sensing range $S_n$	Housing	Switching output	Output function	Connection type	Type	Part no.
0.6 mm	Standard design	NPN	NO	Cable, 3-wire, 2 m <sup>1)</sup>	IM04-0B6NS-ZU1	6020146
			NC	Cable, 3-wire, 2 m <sup>1)</sup>	IM04-0B6PO-ZU1	6020147
		PNP	NO	Cable with connector M8, 3-pin, with knurled nuts, 0.2 m <sup>1)</sup>	IM04-0B6PS-ZR1	6042085
				Cable, 3-wire, 2 m <sup>1)</sup>	IM04-0B6PS-ZU1	6020145
				Cable, 3-wire, 5 m <sup>1)</sup>	IM04-0B6PS-ZUB	6020610
1 mm	Short-body	NPN	NO	Cable with connector M8, 3-pin, 0.2 m <sup>1)</sup>	IM04-01BNSVR8K	6058030
				Cable, 3-wire, 2 m <sup>1)</sup>	IM04-01BNSVU2K	6058028
		PNP	NO	Cable with connector M8, 3-pin, 0.2 m <sup>1)</sup>	IM04-01BPSVR8K	6058031
				Cable, 3-wire, 2 m <sup>1)</sup>	IM04-01BPSVU2K	6058029

<sup>1)</sup> Do not bend below 0 °C.

- **Sub product family:** IH04
- **Installation type:** flush
- **Electrical wiring:** DC 3-wire
- **Sensing range  $S_n$ :** 0.8 mm
- **Housing:** Standard design
- **Output function:** NO

Switching output	Connection type	Type	Part no.
NPN	Cable, 3-wire, 2 m	IH04-0B8NS-VW1	6020149
	Connector M8, 3-pin	IH04-0B8NS-VT1	6020152
PNP	Cable with connector M8, 3-pin, 0.2 m	IH04-0B8PS-VR1	6045178
	Cable, 3-wire, 2 m	IH04-0B8PS-VW1	6020113
	Cable, 3-wire, 85 mm	IH04-0B8PS-VUD	6054677
	Connector M8, 3-pin	IH04-0B8PS-VT1	6020114



- **Sub product family:** IM05
- **Cylindrical thread design:** M5
- **Installation type:** flush
- **Electrical wiring:** DC 3-wire
- **Housing:** Standard design

Sensing range S <sub>n</sub>	Switching output	Output function	Special features	Connection type	Type	Part no.	
0.8 mm	NPN	NC	–	Cable, 3-wire, 2 m	IM05-0B8NO-ZW1	6020157	
		NO	–	Cable, 3-wire, 2 m	IM05-0B8NS-ZW1	6020155	
				Connector M8, 3-pin	IM05-0B8NS-ZT1	6020158	
			Temperature resistance	Cable, 3-wire, 2 m	IM05-0B8NSVS2SS01	6066461	
	PNP	NC	–	Connector M8, 3-pin	IM05-0B8PO-ZT1	6020159	
		NO	–	Cable, 3-wire, 2 m	IM05-0B8PS-ZW1	6011591	
				Cable, 3-wire, 5 m	IM05-0B8PS-ZWB	6021575	
				Connector M8, 3-pin	IM05-0B8PS-ZT1	6020110	
	1.5 mm	NPN	NC	–	Cable, 3-wire, 2 m	IM05-1B5NOVU2S	6049734
					Connector M8, 3-pin	IM05-1B5NOVT0S	6049738
NO			Cable, 3-wire, 2 m		IM05-1B5NSVU2S	6049733	
			Connector M8, 3-pin		IM05-1B5NSVT0S	6049737	
PNP		NC	–	Cable, 3-wire, 2 m	IM05-1B5POVU2S	6049736	
				Connector M8, 3-pin	IM05-1B5POVT0S	6049740	
		NO		Cable with connector M8, 3-pin, with knurled nuts, 0.2 m	IM05-1B5PSVR8S	6069347	
				Cable with connector M8, 3-pin, with knurled nuts, 0.3 m	IM05-1B5PSVR9S	6069466	
				Cable, 3-wire, 2 m	IM05-1B5PSVU2S	6049735	
				Connector M8, 3-pin	IM05-1B5PSVT0S	6049739	

- **Sub product family:** IH06
- **Installation type:** flush
- **Electrical wiring:** DC 3-wire

Sensing range $S_n$	Housing	Switching output	Output function	Connection type	Type	Part no.
1.5 mm	Extremely short model	NPN	NO	Cable, 3-wire, 2 m	IH06-1B5NS-VWK	6020166
				Connector M8, 3-pin	IH06-1B5NS-VTK	6020170
		PNP	NC	Cable, 3-wire, 2 m	IH06-1B5PO-VWK	6020167
				Connector M8, 3-pin	IH06-1B5PO-VTK	6020171
		NO	NO	Cable, 3-wire, 2 m	IH06-1B5PS-VWK	6020165
					IH06-1B5PS-VWXS01	6033574
				Connector M8, 3-pin	IH06-1B5PS-VTK	6020169
		2 mm	Standard design	PNP	NO	Connector M8, 3-pin

- **Sub product family:** IH06
- **Installation type:** quasi-flush
- **Electrical wiring:** DC 3-wire
- **Sensing range  $S_n$ :** 2 mm

Housing	Switching output	Output function	Connection type	Type	Part no.
Standard design	NPN	NO	Cable, 3-wire, 2 m	IH06-02BNS-VW1	7900178
			Connector M8, 3-pin	IH06-02BNS-VT1	7900180
	PNP	NC	Connector M8, 3-pin	IH06-02BPO-VT1	1016857
			NO	Cable, 3-wire, 2 m	IH06-02BPS-VW1
	NO	NO		Connector M8, 3-pin	IH06-02BPS-VT1
			Short-body	NPN	NO
Connector M8, 3-pin	IH06-02BNS-VTK	6025878			
PNP	NC	Connector M8, 3-pin		IH06-02BPO-VTK	6025879
		NO		Cable, 3-wire, 2 m	IH06-02BPS-VWK
Connector M8, 3-pin	IH06-02BPS-VTK		6025877		

- **Sub product family:** IH06
- **Installation type:** non-flush
- **Electrical wiring:** DC 3-wire
- **Sensing range  $S_n$ :** 4 mm

Housing	Switching output	Output function	Connection type	Type	Part no.
Standard design	NPN	NO	Cable, 3-wire, 2 m	IH06-04NNS-VW1	7900182
			Connector M8, 3-pin	IH06-04NNS-VT1	7900183
	PNP	NO	Cable, 3-wire, 2 m	IH06-04NPS-VW1	7900181

Housing	Switching output	Output function	Connection type	Type	Part no.
Short-body	NPN	NO	Cable, 3-wire, 2 m	IH06-04NNS-VWK	6025881
			Connector M8, 3-pin	IH06-04NNS-VTK	6025883
	PNP	NC	Connector M8, 3-pin	IH06-04NPO-VTK	6025884
			Cable, 3-wire, 2 m	IH06-04NPS-VWK	6025880
		NO	Cable, 3-wire, 2 m	IH06-04NPS-VWK	6025880
			Connector M8, 3-pin	IH06-04NPS-VTK	6025882

- **Sub product family:** IHM03
- **Installation type:** flush
- **Electrical wiring:** DC 3-wire

Sensing range $S_n$	Housing	Switching output	Output function	Special features	Connection type	Type	Part no.
0.6 mm	Standard design	NPN	NC	Visual adjustment indicator	Cable, 3-wire, 2 m	IHM03-0B6NOVU2S	1114508
			NO	Visual adjustment indicator	Cable, 3-wire, 2 m	IHM03-0B6NSVU2S	1103991
		PNP	NC	Visual adjustment indicator	Cable, 3-wire, 2 m	IHM03-0B6POVU2S	1111250
			NO	Visual adjustment indicator, IO-Link	Cable with connector M8, 3-pin, 0.2 m	IHM03-0B6PSVR8S	1108736
					Cable, 3-wire, 2 m	IHM03-0B6PSVU2S	1102476
			1 mm	Standard design	PNP	NC	Visual adjustment indicator
NO	Visual adjustment indicator, IO-Link	Cable with connector M8, 3-pin, 0.2 m				IHM03-01BPSVR8S	1108737
		Cable, 3-wire, 2 m			IHM03-01BPSVU2S	1097305	
Short-body	NPN	NO			Visual adjustment indicator	Cable with connector M8, 3-pin, 0.2 m	IHM03-01BNSVR8K
				Cable, 3-wire, 2 m		IHM03-01BNSVU2K	1111030
	PNP	NO		Visual adjustment indicator, IO-Link	Cable with connector M8, 3-pin, 0.2 m	IHM03-01BPSVR8K	1108735
					Cable, 3-wire, 2 m	IHM03-01BPSVU2K	1101607

- **Sub product family:** IMM04
- **Cylindrical thread design:** M4
- **Installation type:** flush
- **Electrical wiring:** DC 3-wire

Sensing range S <sub>n</sub>	Housing	Switching output	Output function	Special features	Connection type	Type	Part no.	
0.6 mm	Standard design	NPN	NC	Visual adjustment indicator	Cable, 3-wire, 2 m	IMM04-0B6NOVU2S	1114510	
			NO	Visual adjustment indicator	Cable, 3-wire, 2 m	IMM04-0B6NSVU2S	1114509	
		PNP	NC	Visual adjustment indicator	Cable, 3-wire, 2 m	IMM04-0B6POVU2S	1111252	
			NO	Visual adjustment indicator, IO-Link	Cable with connector M8, 3-pin, 0.2 m	IMM04-0B6PSVR8S	1108739	
					Cable, 3-wire, 2 m	IMM04-0B6PSVU2S	1103630	
			1 mm	Standard design	NPN	NO	Visual adjustment indicator	Cable, 3-wire, 2 m
NC	Visual adjustment indicator	Cable, 3-wire, 2 m				IMM04-01BPOVU2S	1111253	
NO	Visual adjustment indicator, IO-Link	Cable with connector M8, 3-pin, 0.2 m			IMM04-01BPSVR8S	1108740		
		Cable, 3-wire, 2 m			IMM04-01BPSVU2S	1101613		
Short-body	NPN	NO			Visual adjustment indicator	Cable with connector M8, 3-pin, 0.2 m	IMM04-01BNSVR8K	1114511
						Cable, 3-wire, 2 m	IMM04-01BNSVU2K	1103233
	PNP	NO		Visual adjustment indicator, IO-Link	Cable with connector M8, 3-pin, 0.2 m	IMM04-01BPSVR8K	1108738	
					Cable, 3-wire, 2 m	IMM04-01BPSVU2K	1101614	

- **Sub product family:** IHM04
- **Installation type:** flush
- **Electrical wiring:** DC 3-wire

Sensing range $S_n$	Housing	Switching output	Output function	Special features	Connection type	Type	Part no.	
0.8 mm	Standard design	NPN	NO	Visual adjustment indicator	Cable, 3-wire, 2 m	IHM04-0B8NSVU2S	1105839	
					Connector M8, 3-pin	IHM04-0B8NSVT0S	1107983	
		PNP	NO	Visual adjustment indicator	Visual adjustment indicator	Cable, 3-wire, 2 m	IHM04-0B8POVU2S	1114512
						Cable with connector M8, 3-pin, 0.2 m	IHM04-0B8PSVR8S	1107732
						Cable, 3-wire, 2 m	IHM04-0B8PSVU2S	1101824
						Connector M8, 3-pin	IHM04-0B8PSVT0S	1103977
1.5 mm	Standard design	NPN	NO	Visual adjustment indicator	Cable, 3-wire, 2 m	IHM04-1B5NSVU2S	1101903	
					Connector M8, 3-pin	IHM04-1B5NSVT0S	1107920	
		PNP	NO	Visual adjustment indicator	Visual adjustment indicator, IO-Link	Cable with connector M8, 3-pin, 0.2 m	IHM04-1B5PSVR8S	1108728
						Cable, 3-wire, 2 m	IHM04-1B5PSVU2S	1096869
						Connector M8, 3-pin	IHM04-1B5PSVT0S	1097330
	Short-body	NPN	NO	Visual adjustment indicator	Cable, 3-wire, 2 m	IHM04-1B5NSVU2K	1103992	
					Connector M8, 3-pin	IHM04-1B5NSVT0K		
		PNP	NO	Visual adjustment indicator	Visual adjustment indicator, IO-Link	Cable with connector M8, 3-pin, 0.2 m	IHM04-1B5PSVR8K	1108726
						Cable, 3-wire, 2 m	IHM04-1B5PSVU2K	1101608

- **Sub product family:** IMM05
- **Cylindrical thread design:** M5
- **Installation type:** flush
- **Electrical wiring:** DC 3-wire

Sensing range S <sub>n</sub>	Housing	Switching output	Output function	Special features	Connection type	Type	Part no.
0.8 mm	Standard design	NPN	NC	Visual adjustment indicator	Cable, 3-wire, 2 m	IMM05-0B8NOVU2S	1114516
					Connector M8, 3-pin	IMM05-0B8NOVT0S	1114523
			NO	Visual adjustment indicator	Cable with connector M8, 3-pin, 0.2 m	IMM05-0B8NSVR8S	1108732
					Cable, 3-wire, 2 m	IMM05-0B8NSVU2S	1103634
					Connector M8, 3-pin	IMM05-0B8NSVT0S	1114520
					Cable, 3-wire, 2 m	IMM05-0B8POVU2S	1114515
		PNP	NC	Visual adjustment indicator	Connector M8, 3-pin	IMM05-0B8POVT0S	1111255
					Cable with connector M8, 3-pin, 0.2 m	IMM05-0B8PSVR8S	1111249
			NO	Visual adjustment indicator, IO-Link	Cable, 3-wire, 2 m	IMM05-0B8PSVU2S	1101831
					Connector M8, 3-pin	IMM05-0B8PSVT0S	1103984

Sensing range S <sub>n</sub>	Housing	Switching output	Output function	Special features	Connection type	Type	Part no.
1.5 mm	Standard design	NPN	NC	Visual adjustment indicator	Cable, 3-wire, 2 m	IMM05-1B5NOVU2S	1114518
					Connector M8, 3-pin	IMM05-1B5NOVT0S	1114527
		NO	Visual adjustment indicator	Cable, 3-wire, 2 m	IMM05-1B5NSVU2S	1101904	
				Connector M8, 3-pin	IMM05-1B5NSVT0S	1114526	
		PNP	NC	Visual adjustment indicator	Cable, 3-wire, 2 m	IMM05-1B5POVU2S	1111254
					Connector M8, 3-pin	IMM05-1B5POVT0S	1119900
		NO	Visual adjustment indicator, IO-Link	Cable with connector M8, 3-pin, 0.2 m	IMM05-1B5PSVR8S	1108733	
				Cable, 3-wire, 2 m	IMM05-1B5PSVU2S	1101013	
				Connector M8, 3-pin	IMM05-1B5PSVT0S	1101611	
		Short-body	NPN	NO	Visual adjustment indicator	Cable, 3-wire, 2 m	IMM05-1B5NSVU2K
	Connector M8, 3-pin					IMM05-1B5NSVT0K	1105621
	PNP		NO	Visual adjustment indicator, IO-Link	Cable with connector M8, 3-pin, 0.2 m	IMM05-1B5PSVR8K	1108730
					Cable, 3-wire, 2 m	IMM05-1B5PSVU2K	1101612

- **Sub product family:** IHM06
- **Installation type:** flush
- **Electrical wiring:** DC 3-wire

Sensing range S <sub>n</sub>	Housing	Switching output	Output function	Special features	Connection type	Type	Part no.
1.5 mm	Extremely short model	NPN	NO	Visual adjustment indicator	Cable, 3-wire, 2 m	IHM06-1B5NSVW2G	1103298
					Connector M8, 3-pin	IHM06-1B5NSVT0G	1101120
		PNP	NC	Visual adjustment indicator	Cable, 3-wire, 2 m	IHM06-1B5POVW2G	1104484
					Connector M8, 3-pin	IHM06-1B5POVT0G	1104485
		NO	Visual adjustment indicator, IO-Link	Cable, 3-wire, 2 m	IHM06-1B5PSVU2G	1104494	
				Connector M8, 3-pin	IHM06-1B5PSVW2G	1099600	
	Short-body	PNP	NO	Visual adjustment indicator, IO-Link	Cable, 3-wire, 2 m	IHM06-1B5PSVU2K	1115211
					Connector M8, 3-pin	IHM06-1B5PSVW2K	1114598
		NPN	NO	Visual adjustment indicator	Cable, 3-wire, 2 m	IHM06-1B5NSVU2K	1105620
					Connector M8, 3-pin	IHM06-1B5NSVT0K	1105621
2 mm	Extremely short model	NPN	NC	Visual adjustment indicator	Cable, 3-wire, 2 m	IHM06-02BNOVW2G	1103980

Sensing range $S_n$	Housing	Switching output	Output function	Special features	Connection type	Type	Part no.	
			NO	Visual adjustment indicator	Connector M8, 3-pin	IHM06-02BNOVTOG	1101123	
					Cable, 3-wire, 2 m	IHM06-02BNSVW2G	1103979	
					Connector M8, 3-pin	IHM06-02BNSVTOG	1101126	
			PNP	NC	Visual adjustment indicator	Cable, 3-wire, 2 m	IHM06-02BPOVW2G	1103978
						Connector M8, 3-pin	IHM06-02BPOVTOG	1101122
						NO	Visual adjustment indicator, IO-Link	Cable, 3-wire, 2 m
		Connector M8, 3-pin	IHM06-02BPSVTOG	1101121				
		Standard design	NPN	NC	Visual adjustment indicator			Cable, 3-wire, 2 m
						Connector M8, 3-pin	IHM06-02BNOVTOS	1101132
						NO	Visual adjustment indicator	Cable, 3-wire, 2 m
			Connector M8, 3-pin	IHM06-02BNSVTOG	1101131			
			PNP	NC	Visual adjustment indicator			Cable, 3-wire, 2 m
						Connector M8, 3-pin	IHM06-02BPOVTOS	1101134
		NO				Visual adjustment indicator, IO-Link	Cable, 3-wire, 2 m	IHM06-02BPSVU2S
			Cable, 3-wire, 2 m	IHM06-02BPSVW2S	1101165			
	Connector M8, 3-pin		IHM06-02BPSVTOG	1101133				
	Short-body	NPN	NC	Visual adjustment indicator	Cable, 3-wire, 2 m	IHM06-02BNOVW2K	1104488	
					Connector M8, 3-pin	IHM06-02BNOVTOK	1101129	
					NO	Visual adjustment indicator	Cable, 3-wire, 2 m	IHM06-02BNSVW2K
			Connector M8, 3-pin	IHM06-02BNSVTOG			1101130	
			PNP	NC			Visual adjustment indicator	Cable, 3-wire, 2 m
					Connector M8, 3-pin	IHM06-02BPOVTOK		1101128
		NO			Visual adjustment indicator, IO-Link	Cable, 3-wire, 2 m		IHM06-02BPSVU2K
			Cable, 3-wire, 2 m	IHM06-02BPSVW2K		1101164		
			Connector M8, 3-pin	IHM06-02BPSVTOG		1101127		



Sensing range $S_n$	Housing	Switching output	Output function	Special features	Connection type	Type	Part no.
3 mm	Extremely short model	NPN	NC	Visual adjustment indicator, triple sensing range	Connector M8, 3-pin	IHM06-03BNOVT0G	1103986
			NO		Cable, 3-wire, 2 m	IHM06-03BNSVW2G	1107047
		PNP	NC		Connector M8, 3-pin	IHM06-03BNSVT0G	1103985
			NO	Connector M8, 3-pin	IHM06-03BPOVT0G	1103983	
				Cable, 3-wire, 2 m	IHM06-03BPSVW2G	1107049	
			Connector M8, 3-pin	IHM06-03BPSVT0G	1103982		
	Standard design	NPN	NO	Visual adjustment indicator, triple sensing range	Connector M8, 3-pin	IHM06-03BNSVT0S	1107051
		PNP	NO	Visual adjustment indicator, IO-Link, triple sensing range	Connector M8, 3-pin	IHM06-03BPSVT0S	1107050
	Short-body	NPN	NC	Visual adjustment indicator, triple sensing range	Connector M8, 3-pin	IHM06-03BNOVT0K	1104498
			NO		Cable, 3-wire, 2 m	IHM06-03BNSVW2K	1113394
			Connector M8, 3-pin		IHM06-03BNSVT0K	1104496	
		PNP	NC	Connector M8, 3-pin	IHM06-03BPOVT0K	1104497	
			NO	Visual adjustment indicator, IO-Link, triple sensing range	Connector M8, 3-pin	IHM06-03BPSVT0K	1104495

- **Sub product family:** IHM06
- **Installation type:** non-flush
- **Electrical wiring:** DC 3-wire

Sensing range $S_n$	Housing	Switching output	Output function	Special features	Connection type	Type	Part no.
4 mm	Standard design	NPN	NC	Visual adjustment indicator	Connector M8, 3-pin	IHM06-04NNOVT0S	1104504
			NO	Visual adjustment indicator	Cable, 3-wire, 2 m	IHM06-04NNSVW2S	1104514
					Connector M8, 3-pin	IHM06-04NNSVT0S	1104503
		PNP	NC	Visual adjustment indicator	Connector M8, 3-pin	IHM06-04NPOVT0S	1104505
			NO	Visual adjustment indicator, IO-Link	Cable, 3-wire, 2 m	IHM06-04NPSVW2S	1104515
					Connector M8, 3-pin	IHM06-04NPSVT0S	1104506
	Short-body	NPN	NC	Visual adjustment indicator	Connector M8, 3-pin	IHM06-04NNOVT0K	1104501
			NO	Visual adjustment indicator	Cable, 3-wire, 2 m	IHM06-04NNSVW2K	1104513
					Connector M8, 3-pin	IHM06-04NNSVT0K	1104502
		PNP	NC	Visual adjustment indicator	Connector M8, 3-pin	IHM06-04NPOVT0K	1104500
			NO	Visual adjustment indicator, IO-Link	Cable, 3-wire, 2 m	IHM06-04NPSVW2K	1104512
					Connector M8, 3-pin	IHM06-04NPSVT0K	1104499

Sensing range S <sub>n</sub>	Housing	Switching output	Output function	Special features	Connection type	Type	Part no.
6 mm	Standard design	NPN	NO	Visual adjustment indicator, triple sensing range	Connector M8, 3-pin	IHM06-06NNSVT0S	1113395
		PNP	NO	Visual adjustment indicator, IO-Link, triple sensing range	Connector M8, 3-pin	IHM06-06NPSVT0S	1114155
	Short-body	NPN	NC	Visual adjustment indicator, triple sensing range	Connector M8, 3-pin	IHM06-06NNOVT0K	1104511
			NO		Cable, 3-wire, 2 m	IHM06-06NNSVW2K	1106314
		PNP	NC		Connector M8, 3-pin	IHM06-06NNSVT0K	1104510
					Cable, 3-wire, 2 m	IHM06-06NPOVW2K	1108857
			NO		Connector M8, 3-pin	IHM06-06NPOVT0K	1104509
					Cable with connector M8, 3-pin, 0.15 m	IHM06-06NPSVRDKS01	1139255
					Cable with connector M8, 3-pin, with knurled nuts, 0.2 m	IHM06-06NPSVR8K	1134492
					Cable, 3-wire, 2 m	IHM06-06NPSVW2K	1105591
	Connector M8, 3-pin	IHM06-06NPSVT0K	1104507				

## SICK AT A GLANCE

SICK is one of the leading manufacturers of intelligent sensors and sensor solutions for industrial applications. A unique range of products and services creates the perfect basis for controlling processes securely and efficiently, protecting individuals from accidents and preventing damage to the environment.

We have extensive experience in a wide range of industries and understand their processes and requirements. With intelligent sensors, we can deliver exactly what our customers need. In application centers in Europe, Asia and North America, system solutions are tested and optimized in accordance with customer specifications. All this makes us a reliable supplier and development partner.

Comprehensive services complete our offering: SICK LifeTime Services provide support throughout the machine life cycle and ensure safety and productivity.

For us, that is “Sensor Intelligence.”

## WORLDWIDE PRESENCE:

Contacts and other locations –[www.sick.com](http://www.sick.com)